

Tom Thumb Fisherman's Cottages

Tel: 01323 723248 / 07799896039

www.eastbourne-holidayflats.co.uk



Tom Thumb Fisherman's self catering cottages, are family run by the owners Barbara & Roger.

The cottages were built on the beach about 250 years ago for local fishermen, & because of their history, & now being part of Eastbourne's historic past, they are featured within "The East of the Pier Heritage Weekly Walks" aimed at discovering old Eastbourne.

Now they shelter behind the sea front in Royal Parade, in a quiet Burfield Road, just one turning from the beach & sea. The local "Seaside shops", "Sainsbury's Local", etc are around the corner. Eastbourne town centre is a five minute walk on level ground, whilst the pier is a short stroll along the sea front. They are close to all amenities & bus stops. Parking is unrestricted in the streets nearby.

Our attractive period self catering cottages are sympathetically modernised, yet retain the quaint delightful "Old World Charm", of yester year.

Each cottage has 2 bedrooms upstairs, a twin & a double, sleeping up to 4 persons. Downstairs on the ground floor are a shower, hand basin & W.C. Lounge/diner with TV/CD/DVD player & radio, & kitchen with full size electric cooker, microwave & fridge/freezer, all utensils, crockery/glass ware, etc, hairdryer, iron/board. They are fully equipped with everything needed for a comfortable stay. All bed linen & towels are provided & changed weekly. The cottages have central heating, for you to use when necessary.

Children are welcome at any age. Each cottage has its own rear fenced & locked backyard, with washing line & picnic table, where children can play. Pushchairs, bikes, surf boards etc. can be left here too.

We regret our cottages are unsuitable for people in wheelchairs & sadly we do not take pets. Smoking is not allowed within the cottages.

These historic, quaint, Tom Thumb fisherman's cottages are full of "Old World Charm" for those wanting accommodation offering something a little different, yet perfect for a holiday in Eastbourne.

CONTACT US DIRECTLY TO BOOK or for AVAILABILITY - WE ARE OPEN ALL YEAR

TOM THUMB FISHERMAN'S COTTAGES. (prop. Roger & Barbara Clark).



c/o: 17A Bedfordwell Road, Eastbourne, East Sussex, BN21 2BG.

Tel/Fax: 01323 723248 / 07799896039

Web site: www.eastbourne-holidayflats.co.uk

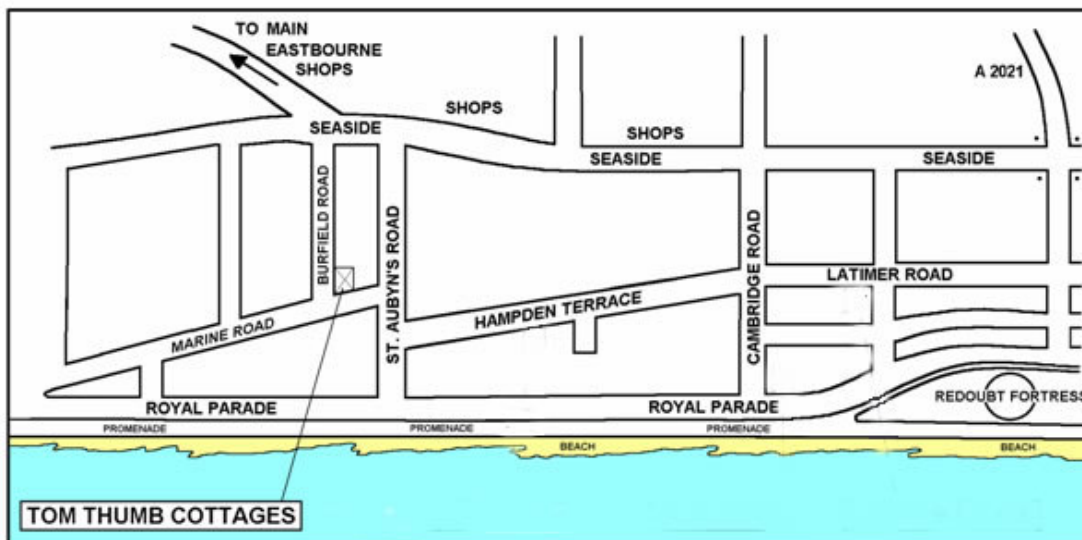
Email: info@eastbourne-holidayflats.co.uk

1. Bookings are from Saturday - Saturday in the Summer Season.
2. Short breaks for part weeks are available from October - April Then day rates per person apply. Minimum stay 3 nights.
3. The cottages are available from 2.00pm on day of arrival.
By prior arrangement, it may be possible to have an earlier arrival time.
3. The Cottages must be vacated by 9.30am on day of departure.
4. The addresses of the Cottages are :-
5, Burfield Road, Eastbourne , BN22 7AT
6, Burfield Road, Eastbourne, BN22 7AT

.....
PLEASE SEE MAP ON REVERSE OF PRICE LIST
.....

TOM THUMB FISHERMAN'S COTTAGES – CONDITIONS OF RESERVATION

1. A non-returnable deposit is payable with this reservation form.
2. The balance is due 28 days prior to the commencement of your holiday.
3. If you cancel your holiday for whatever reason, the balance is still payable.
However we will do our best to re-let on your behalf.
4. Full payment is required at the time of booking for persons living outside the UK.
5. The Cottage is available for occupation from 2.00pm on the day of arrival.
6. The Cottage must be vacated by 9.30am on the day of departure.
7. The hirer shall be responsible for & agrees to make payment for any damage caused to the Cottage or any furniture, fixtures or equipment, which may be lost, damaged or destroyed.
8. An inventory is provided & should be checked on arrival & again on departure.
9. The hirer shall keep the Cottage clean & tidy.
10. A set of keys shall be provided. The hirer shall keep the Cottage locked & the keys safe.
11. Keys are to be returned as soon as possible, but no later than 9.30am on the day of departure.
12. No property belonging to the proprietors shall be removed from the Cottage.
13. The hirer shall not hold parties, create noise or cause any inconvenience to others at the cottage, especially after 10.30pm.
14. No animals or pets of any kind are allowed onto the premises.
15. The Cottage shall be used for holiday accommodation only.
16. The proprietors shall not be responsible for any loss or damage to the hirer's or member's of the hirer's party's possessions.
17. The Cottage is to be used only by the persons named & by no more than the numbers stated on the booking form.
18. Tom Thumb Fisherman's Cottages are holiday accommodation as defined by the Housing Act & would be recovered under Mandatory Clause Ground 3 Part 1. Schedule 2 of the Housing Act.
- 19 . As no smoking is permitted inside the cottages, smokers may smoke in the rear courtyard.**

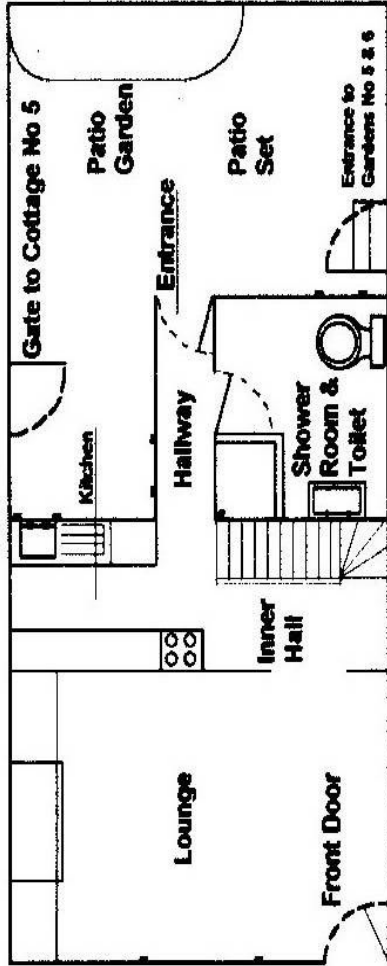


TOM THUMB FISHERMAN'S COTTAGES – CONDITIONS OF RESERVATION

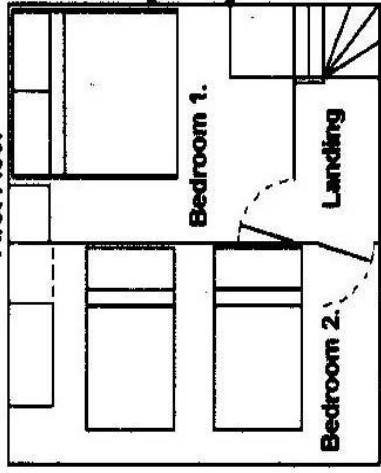
1. A non-returnable deposit is payable with this reservation form.
2. The balance is due 28 days prior to the commencement of your holiday.
3. If you cancel your holiday for whatever reason, the balance is still payable. However we will do our best to re-let on your behalf.
4. Full payment is required at the time of booking for persons living outside the UK.
5. The Cottage is available for occupation from 2.00pm on the day of arrival.
6. The Cottage must be vacated by 9.30am on the day of departure.
7. The hirer shall be responsible for & agrees to make payment for any damage caused to the Cottage or any furniture, fixtures or equipment, which may be lost, damaged or destroyed.
8. An inventory is provided & should be checked on arrival & again on departure.
9. The hirer shall keep the Cottage clean & tidy.
10. A set of keys shall be provided. The hirer shall keep the Cottage locked & the keys safe.
11. Keys are to be returned as soon as possible, but no later than 9.30am on the day of departure.
12. No property belonging to the proprietors shall be removed from the Cottage.
13. The hirer shall not hold parties, create noise or cause any inconvenience to others at the cottage, especially after 10.30pm.
14. No animals or pets of any kind are allowed onto the premises.
15. The Cottage shall be used for holiday accommodation only.
16. The proprietors shall not be responsible for any loss or damage to the hirer's or member's of the hirer's party's possessions.
17. The Cottage is to be used only by the persons named & by no more than the numbers stated on the booking form.
18. Tom Thumb Fisherman's Cottages are holiday accommodation as defined by the Housing Act & would be recovered under Mandatory Clause Ground 3 Part 1. Schedule 2 of the Housing Act.
19. **As no smoking is permitted inside the cottages, smokers may smoke in the rear courtyard.**

Tom Thumb Fisherman's Cottages Floor Plans

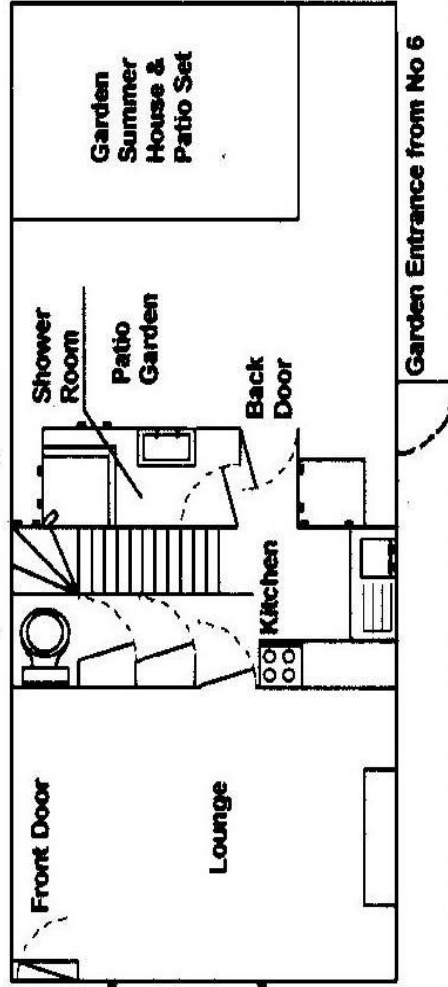
Plan of Cottage No 6



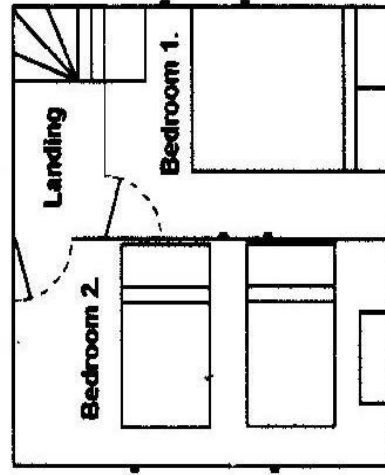
First Floor

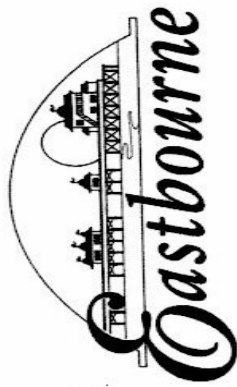
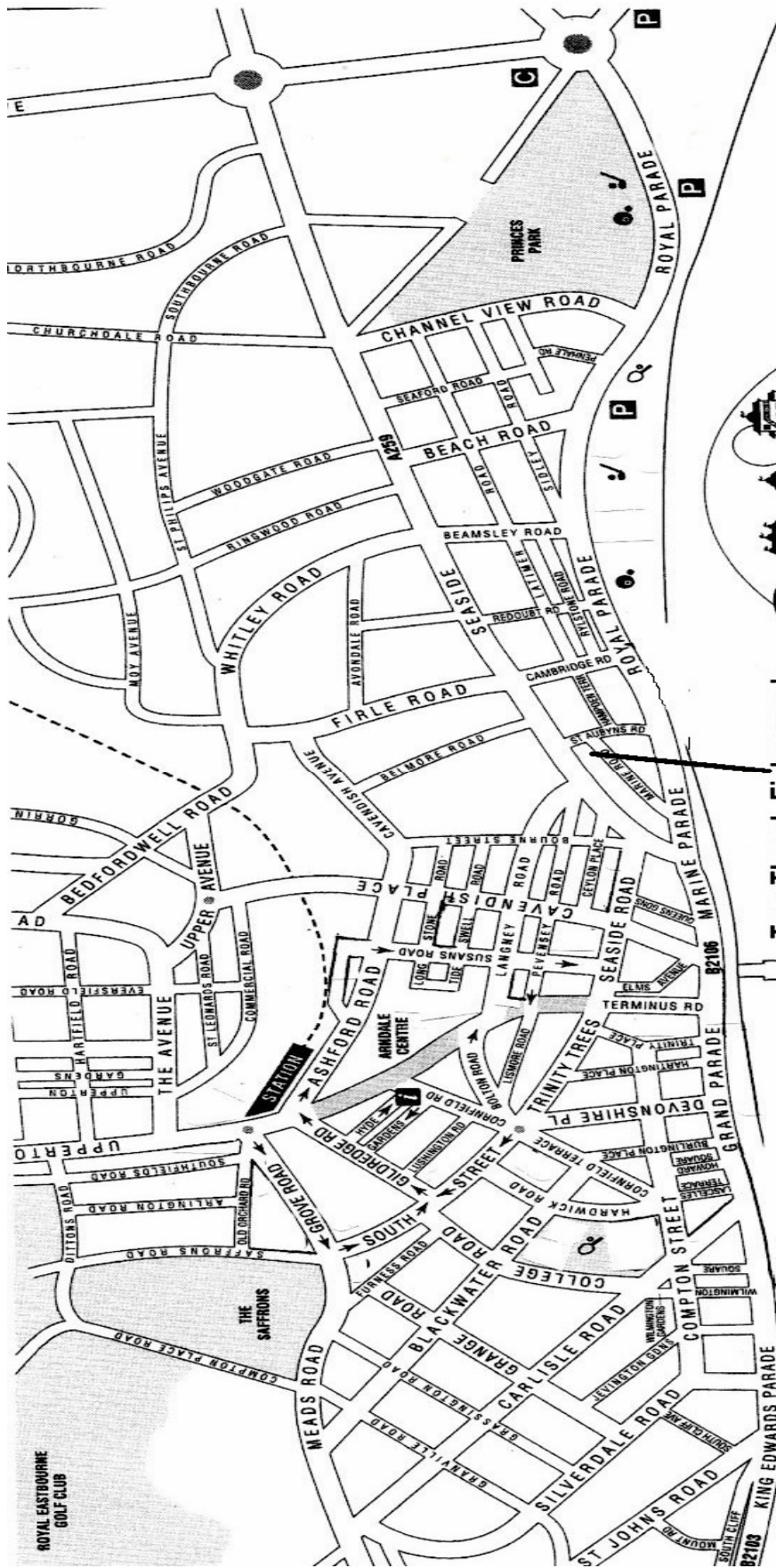


Plan of Cottage No 5



First Floor





Tom Thumb Fisherman's
Cottages



APPROX SCALE

EASTBOURNE HAS ALL THE FOLLOWING & MUCH MORE

A SUNNY SEASIDE TOWN SHELTERED BY THE SOUTH DOWNS with clean beaches, rock pools, safe sea swimming & good weather.

THE BEAUTIFUL SOUTH DOWNS-- discover the South Downs Way and the UK's 10th National Park for countryside walks, picnics and fantastic views over the English Channel.

SOVEREIGN HARBOUR / MARINA with quayside cafes, bars and restaurants, shopping, multi screen cinema and a host of magnificent yachts.

ENTERTAINMENT at one of the theatres, Devonshire Park Theatre , Royal Hippodrome, Congress Theatre and the Winter Gardens or at one of the 2 cinemas, one in the town centre and the other Multiplex Cinema at the Sovereign Harbour.

EATING OUT is a delight, whether it be pub food or a restaurant. The local area has an abundance to cater for most tastes. A large selection of coffee shops provide snacks and refreshment and if you want to eat—in a good selection of take-aways are on your door step.

EVENTS, a year packed with differing events to suit all interests and age groups from International Tennis, Airbourne seafront air display, Bowls Tournaments, Regattas, Bonfire Society Processions & Fireworks, Beer Festival, Magnificent Motors, Carnival, Fun Fairs, Circus & many more

OUTDOOR ADVENTURES, for spills and thrills, bike rides etc. sailing, dry ski run, surf boarding, hang gliding.

OUT & ABOUT visit the historic Redoubt Fortress , built to repel Napoleon, the Heritage Centre, take a look through the Victorian Camera Obscura on Eastbourne's wonderful Pier, Beachy Head and its light house. Visit the Towner art gallery or listen to a variety of music at the open air seafront Bandstand.

CHILDREN will love Treasure Island, Fort Fun, crazy golf and Eastbourne's Miniature Steam railway with 5 acre play and nature park or a ride on the DOTTO, a little train that goes along the sea front. Druzillas the award winning small animal zoo and play ground or Knock Hatch adventure park and ski centre.

Tom Thumb Fisherman's Cottages are close to most of these amenities and the others are easy get to.

